


The Axicon logo consists of the word "axicon" in a white, lowercase, sans-serif font, centered within a red rectangular background.

THE BARCODE EXPERTS

A close-up photograph of a hand holding a blue Axicon 6000-W barcode scanner. The scanner is positioned over a white medicine box. The scanner's lens is focused on a barcode on the box. The box has text including "28 Tablets Terbin", "CS4890", and "10/2011".

Axicon 6000-W pharmacode verifier user guide





Axicon 6000-W



Contents

Important information	4
Introduction	5
Installation	6
Calibration	8
Using the 6000-W	9
Product lookup	12
Setup	13
Saving and printing	14
Software licence	15
Warranty	17
Service contract	18
Annual service	19
Contact us	20



Axicon 6000-W

Important information

The Axicon 6000-W Laetus (Pharmacode) verifier has been specifically designed to verify Laetus (Pharmacode) barcodes. As the symbol has been designed to be read by a white light source this verifier uses white light. This verifier cannot be used to verify any other barcodes.

The verifier is a high precision opto-electronic device and should be handled with due care. Please use the plastic case to protect the equipment when not in use.

Only use cables and other accessories supplied by Axicon as the use of non-approved accessories will invalidate the warranty.

If the verifier is dropped (or subjected to similar accidental damage) the accuracy of the results may be affected, so please return it to us for servicing. We also recommend that it is factory recalibrated annually.



Introduction

What is in the case.

- Axicon 6000-W verifier with USB cable.
- Software CD.
- Wallet containing this user guide and calibration card.

The Axicon 6000-W is designed to work with any PC running a version of Microsoft Windows currently supported by Microsoft.



Installation

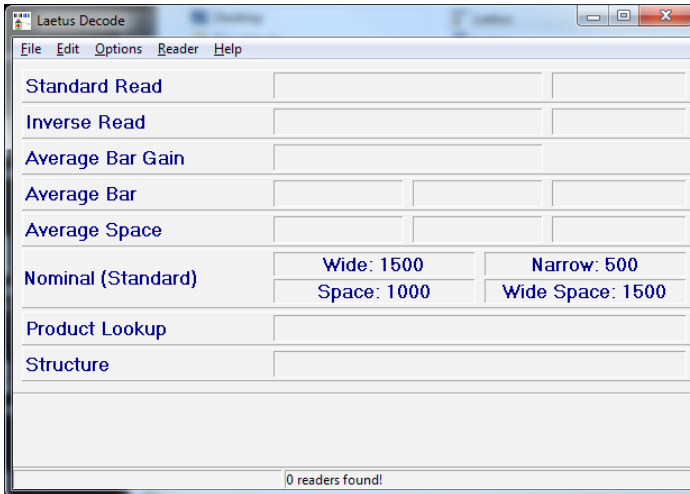
Please do not connect the verifier at this stage. The software should be installed before the verifier is plugged into a USB port on the computer.

You will need to install the Axicon linear verifier software which includes the Laetus software.

To install the Axicon linear software, insert the CD into your computer's DVD drive. The program should run automatically, but if not, open the CD using Windows Explorer, double-click the Autorun Program, and click on **Install Axicon Verifier**. Follow the on-screen instructions, and after you have clicked on the **Finish** button, leave the software CD in the PC in order to install the USB drivers.

After installation is completed you will find the **Axicon Verifier** directory in **Start Menu/Programs** and a shortcut to the program on your desktop.

To open the Laetus software go to the Axicon verifier directory, click on this and then click on Laetus Pharmacode verifier.





To place a shortcut for the program on your desktop or in your task bar, right click on the Laetus application file again, and the appropriate options will appear.

Now plug in the Axicon 6000-W to your computer so that the USB driver can be installed. The software should detect the verifier and turn it on so that the white LEDs are all illuminated. The text at the bottom of the command window, **Laetus Decode** should read **Reader ABCD activated!**, where **ABCD** is the serial number of the verifier.

If the verifier is not found, click on **Reader** then **Reset Reader** from the dropdown menu, or press F3. You will need to choose the verifier (identified with its serial number), then click on **Activate**.

Double click on the **Laetus** shortcut on the desktop to start running the program.



Calibration

The calibration process for the Axicon 6000-W verifier is carried out using the Axicon Verifier program and not the Laetus program. The calibration records are however accessible by both software programs.

Calibration should be carried out after installation and at regular intervals. You will need your calibration card which should be in your documentation wallet.

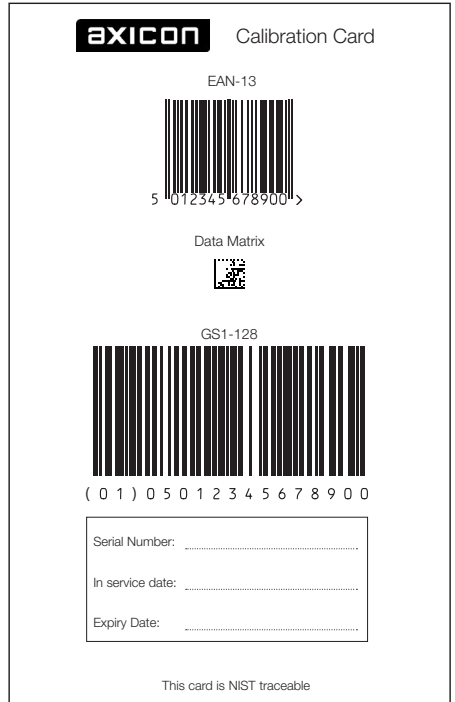
Use the EAN-13 calibration code at the top of the card.

Calibration is a quick and simple process. Select **Calibrate** from the **Options** menu of the command window (or press F2). You will see a window with two edit boxes for minimum and maximum reflectance values. Ensure that the values shown in the window match the values printed at the bottom of the calibration sheet. Modify the figures on the window if necessary to ensure that they are the same as those printed on the card.

Please note that the **Summary** window will now show **Error** alongside **Structure** and highlight the box in red. This is not an error when the 6000-W is calibrated.

With the **Calibration** window open scan the calibration barcode 10 times. Then click the OK button. The verifier is now calibrated and ready to use. After calibration, store the calibration sheet in the documentation wallet, away from light and physical damage.

After calibrating the Axicon 6000-W please close down the Axicon Verifier program and start the Laetus program.





Using the 6000-W

With the verifier in contact with the barcode, press the button underneath the reader, or from the menu on the command window choose **Reader**, then **Get Scan**, or use **Ctrl + G**. Read the barcode only once.



The **Laetus Decode** window provides the binary pattern data followed by the value of the data, and shows this in both directions. All the measurements are expressed in μm (thousandths of a millimetre), and the entries are coloured green or red depending on whether they are in specification. An image of the symbol that has been read is also shown in the window.



Using the 6000-W

The **Average Bar** row provides the width of the wide bars then the width of the narrow bars, and then the wide bar width to narrow bar width ratio.

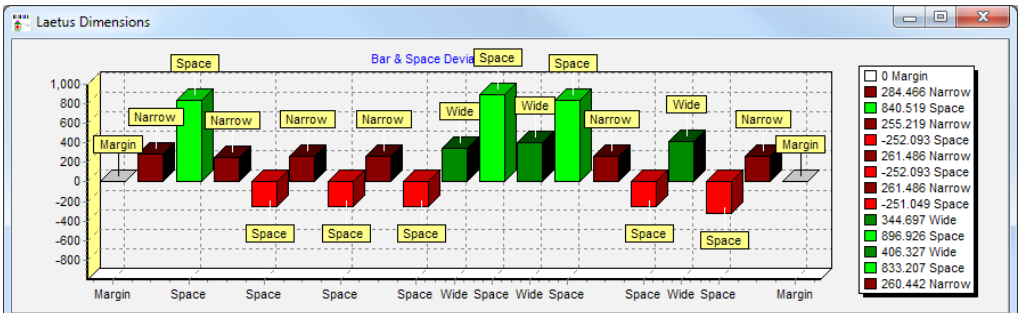
The **Average Space** row provides the width of the narrow space, then the width of a wide space if one is present. The last entry provides a count for the number of wide spaces. The **Nominal (Standard)** section provides the nominal measurements for all these elements, again expressed in μm .

The Product Lookup will always display **Not Found!** with a red background if this has not been established as explained below.

The **Laetus Dimensions** window provides more information about the symbol. Click on **Options** in the main window, then choose **Show Dimensions** from the dropdown menu, or press F11 to open it.

The bar graph shows the bars and spaces in terms of their deviations from their nominal values. When these measurements are within the tolerances allowed by the Laetus specification, the elements are shown in two tones of green. Dark green represents the bars, and pale green represents the spaces.

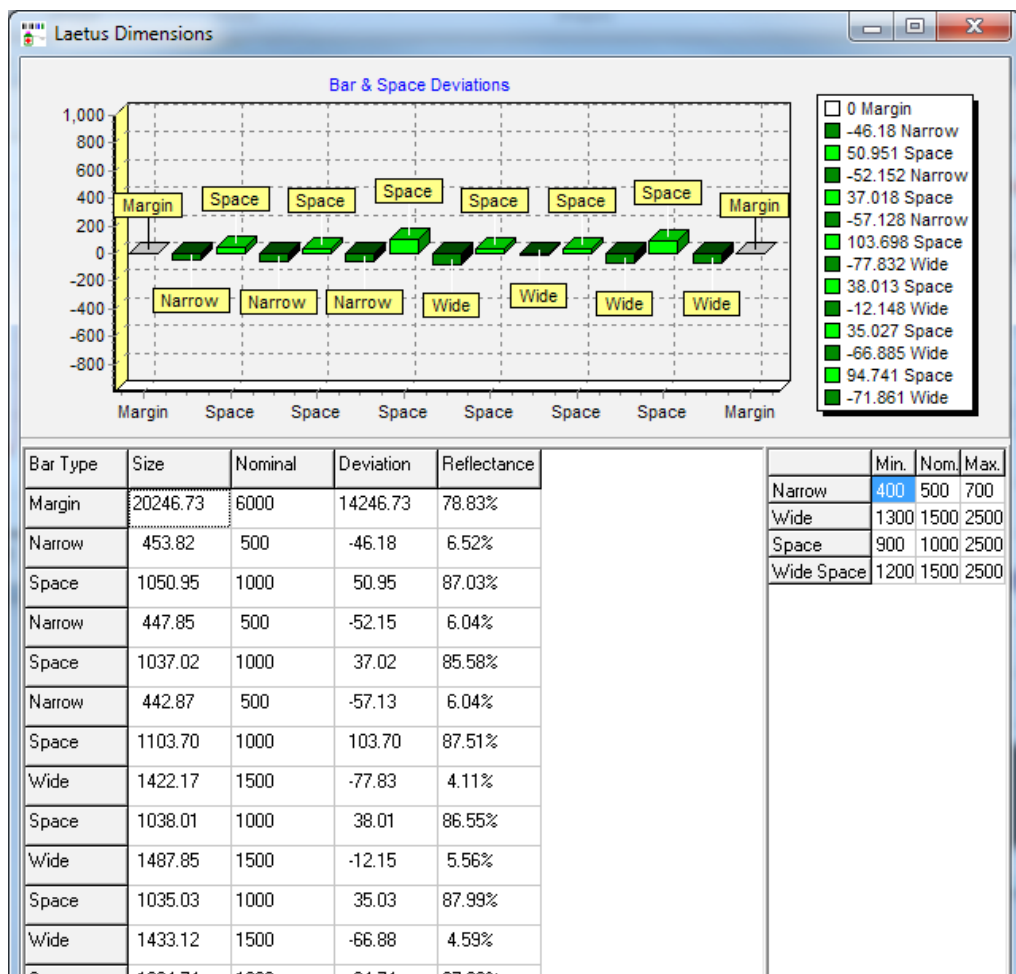
When the symbol does not conform to the Laetus specification the bar graph may look something like this (below). The elements in red (darker for bars, paler for spaces) are out of tolerance, with the spaces here shown in pale red being too narrow.





The table below the bar graph provides the measured width of each element, together with its nominal width, its deviation from this, and its reflectance value.

The verifier does not give a grade to the barcode as there is no published standard for grading.

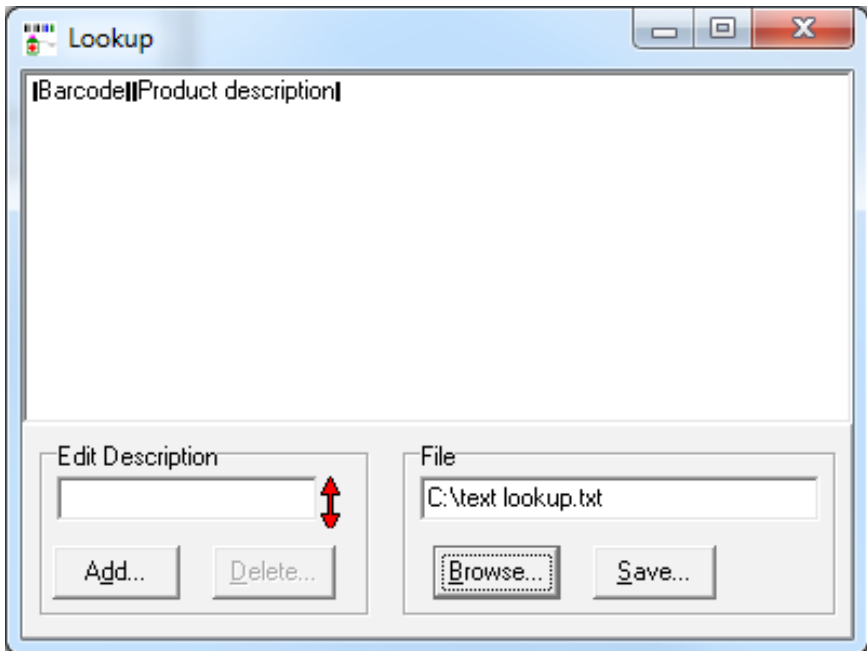




Product Lookup

The software has a Product Lookup facility and it will automatically attempt to locate the Laetus code in the lookup file and display the description of the product. The product look-up file can be examined and edited by pressing the F7 function key or selecting the lookup function from the Options menu.

When a code is not found in the table, it can be added to the lookup table by ensuring the correct code is in the **Edit Description** field and clicking the Add button. This will bring up a dialogue box into which a description can be added. Once this has been done, then the next time this code is scanned the description from the lookup file will be shown on the command window.



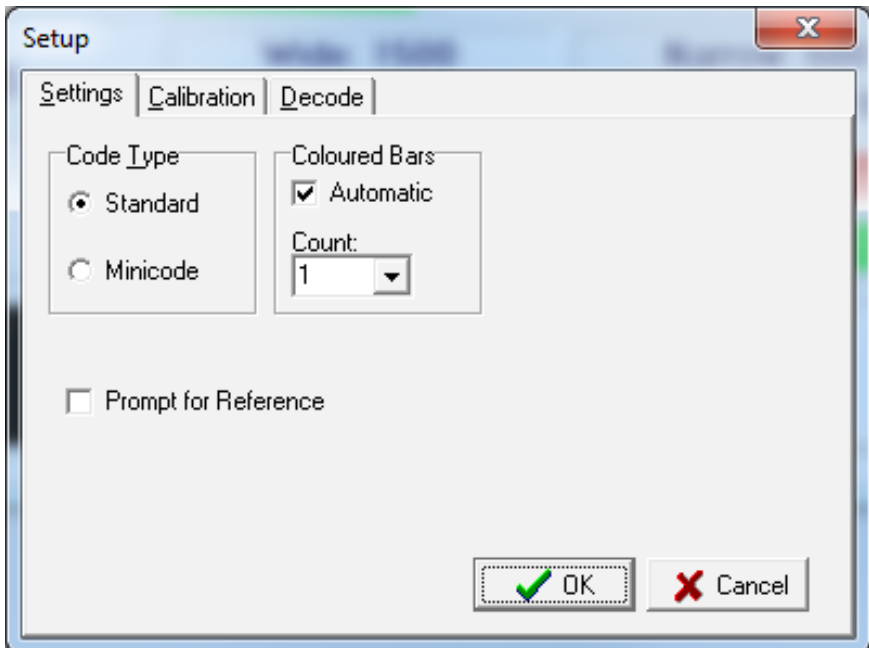


Setup

Press F5 or from the command window click on **Options** then **Setup** from the dropdown menu to open the **Setup** window.

The **Settings** tab allows you to switch between standard Laetus codes and Minicodes. The verifier will also automatically look for supplementary codes, but this can be changed by unticking the Automatic box and then you can select the number of coloured bars manually.

The **Calibration** tab allows you to change the file where all calibration records are kept. This must be the same file as that used by the Axicon Verifier software. The **Decode** tab is only for use by Axicon, and all options are unavailable.





Saving and printing

The screenshot shows the 'Laetus Decode' application window. The menu bar includes File, Edit, Options, Reader, and Help. The main display area contains a table with the following data:

Standard Read	0001111	142
Inverse Read	1111000	247
Average Bar Gain	-54.88	
Average Bar	W: 1442.82	N: 448.18
Average Space	1059.91	W: 0.00
Nominal (Standard)	Wide: 1500	Narrow: 500
	Space: 1000	Wide Space: 1500
Product Lookup	Not Found!	
Structure	OK	

Below the table is a bar graph with six vertical bars of varying heights. At the bottom of the window, the status bar displays '2048 samples, 17 elements' and 'Decoded!'.

When you have verified a barcode, click on the **File** menu on the command window and choose **Save** from the drop down menu. These records are created as .bpc files. When you want to print out a report, go to **File** and then choose **Print** from the drop down menu. The report will be headed **Axicon Binary Pharmaceutical Code Verification Report** and includes information from both the command and dimensions windows. The report does not include the image of the barcode or the bar graph of deviations.



Software licence agreement

This software is Copyright © Axicon Auto ID Limited

Use of the software is subject to the Axicon software licence terms set out below. Using the software indicates your acceptance of these licence terms. If you do not accept these within 14 days, you may return the entire unused product for a full refund.

Axicon grants you a licence to use any number of copies of the software, but only for use with an Axicon verifier. “Use” means storing, loading, installing, executing or displaying the software. You may not modify the software or disable any of its licensing or control features.

Ownership

The software is owned and copyrighted by Axicon Auto ID Limited. Your licence confers no title or ownership in the software and is not a sale of rights in the software.

Copies

You may only make copies of the software for archival purposes or when copying is an essential step in its use. You must reproduce all copyright notices in the original software on all copies. You may not copy the software onto a bulletin board or similar publicly accessible system.

No disassembly or decryption

You may not disassemble or decompile the software without prior written consent from Axicon.

Transfer

Your licence will automatically terminate upon any transfer of the software. Upon transfer, you must deliver the software, including any copies and related documentation, to the transferee. The transferee must accept these licence terms as a condition of the transfer.

Termination

Axicon may terminate your licence upon notice of failure to comply with any of these terms. Upon termination, you must immediately destroy the software, together with all copies, adaptations and merged portions in any form.



Axicon 6000-W

Software licence agreement

Export requirements

You may not export or re-export the software in contravention of any applicable laws or regulations.

This agreement should be construed in accordance with the laws of England.

DISCLAIMER

In the following the expression “verifier” means the verifier hardware and the associated software.

We have taken care to ensure that this verifier is free from defects. However since we have no control over the circumstances in which you might use it you must satisfy yourself that it is suitable for your needs. Neither Axicon Auto ID Limited nor the vendor of this verifier can accept any liability for any loss or damage (consequential or otherwise) which may be caused by its use.

If the verifier or any part of it is defective in any way, or in some other way does not meet your expectations, the liability of Axicon Auto ID Limited is limited to the cost of the product. You should bear this limitation in mind if you use this verifier in any situations where the acceptance or rejection of shipments of goods or your reputation may depend upon the quality of a barcode.



Warranty

The 6000-W verifier is sold with a two year parts and labour warranty against manufacturing defects. This is a return to bench warranty with shipping costs in one direction being borne by the customer/distributor.

Should you need to return the unit to Axicon the original case (plus appropriate packaging) must be used. If the equipment is returned without the original case, we will automatically charge an additional sum for its replacement.

Axicon's standard repair turnaround time is 7-10 working days. This standard warranty does not include the provision of a loan unit. Loan units can be supplied on request.

Axicon reserves the right to charge an inspection fee for any equipment returned under warranty for which no fault is found. Please contact us to obtain an RMA number before returning any equipment. This number must be quoted on all documentation. We cannot accept responsibility for equipment returned without an RMA number.



Axicon 6000-W

Service contract

A service contract may be purchased within 30 days from the date of despatch. This allows you to return your verifier back to us at no extra cost for its annual VCAS (verifier conformance and alignment service) so that you can be sure it still measures barcode quality in accordance with the requirements of ISO/IEC 15426-1.

The service contract will also extend the warranty beyond two years, so that if it breaks down, all parts and labour will be provided free of any extra charges. The only exception is when the verifier has been misused, in which case labour costs will be covered, but not those of the parts.



Annual service conformance

All verifiers need servicing every year to ensure that they measure barcode quality in accordance with the relevant ISO/IEC standards. This verifier conformance and alignment service (VCAS) ensures that the verifier is internally dust-free, checks that it is focused correctly, and re-calibrates the hardware to account for any change in the brightness of the LEDs used to illuminate the barcodes.

This annual service is not the same as user calibration, as it looks at the output of the LEDs and corrects for any variance in their evenness of illumination across the whole field of view. Over time the LEDs will fade but they will not fade uniformly. User calibration ensures that the verifier is measuring the darkest and brightest reflectances correctly but it cannot correct for any variance in the illumination.

After your verifier has been serviced, we will return it you with the latest version of the software on CD together with a new calibration sheet, and a new user guide that will include the new certificate of ISO/IEC conformance. You will then need to calibrate the verifier before you use it again. The latest software can always be downloaded free of charge from our website, www.axicon.com.

To arrange for your verifier to be serviced:

1. Contact us on
Telephone: +44 (0) 1869 351155 | Fax +44 (0) 1869 352404
Email: vcas@axicon.com
2. We will provide you with an RMA number (Return to Manufacturer Authority) and an RMA form.
3. Please fill in all details requested on the RMA form, including the RMA number.
4. Return the verifier (including all cables) in its original case with the completed RMA form, purchase order and your payment details to us at Axicon Auto ID Ltd, Church Road, Weston on the Green, Oxfordshire OX25 3QP. We cannot take responsibility for units returned in alternative packaging.
5. We will normally complete the service and re-calibration of your verifier within 7-10 days.



Contact us

Axicon Auto ID Ltd
Church Road
Weston on the Green
Oxfordshire
OX25 3QP
UK

Tel: +44 (0) 1869 351 155
Fax: +44 (0) 1869 351 205
Email: info@axicon.com
Website: www.axicon.com

As Axicon continually improves its products, their specifications and features are subject to change without notice. All trademarks are acknowledged as belonging to their respective companies.

Your Axicon distributor